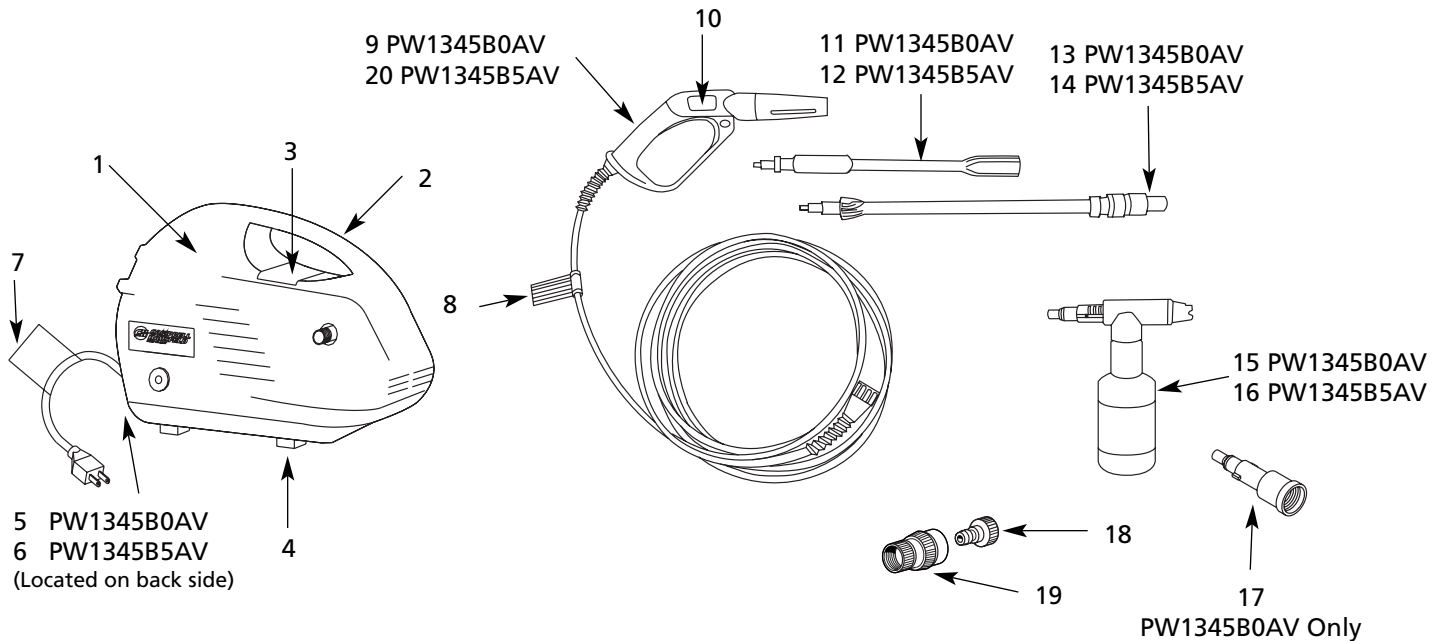


## Replacement Parts List

Model PW1345B

For parts, products & service information visit  
**POWER XPERT**  
www.chpower.com



## For Replacement Parts, Call 1-800-330-0712

Please provide following information:

- Model number
- Serial number (if any)
- Part description and number as shown in parts list

Address parts correspondence to:

Campbell Group/Parts Department  
100 Production Drive  
Harrison, OH 45030

Ref. No.	Description	Part No.	Qty.
1	Shell, inlet side	PM229900SV	1
2	Shell, outlet side	PM230000SV	1
3	Unit warning decal	DK627500SV	1
4	Foot (includes 4 feet)	PM230400SV	1
5	Unit specification decal	DK627700SV	1
6	Unit specification decal	DK627701SV	1
7	Power cord warning decal	DK627600SV	1
8	Hose safety decal	DK627900SV	1
9	Gun/hose	PM230300SV	1
10	Gun safety lock decal	DK627800SV	1

Ref. No.	Description	Part No.	Qty.
11	Short lance	PM230200AV	1
12	Short lance	PM235900SV	1
13	Adjustable lance	PM230100AV	1
14	Adjustable lance	PM235800SV	1
15	Detergent applicator	PM231200SJ	1
16	Detergent applicator	PM014700SV	1
17	Brush adapter	PM020400AV	1
18	Fitting, nipple adapter	PM022100AV	1
19	Fitting, quick connect	PM020600SV	1
20	Gun/hose	PM237100SV	1