

**Para ordenar repuestos, sírvase llamar al distribuidor de Campbell Hausfeld más cercano a su domicilio**

Sírvase suministrarlos la siguiente información:

- Número del modelo
- Número de Serie (de haberlo)
- Descripción y número del repuesto según la lista de repuestos

Puede escribirnos a:

Parts Department  
100 Production Drive  
Harrison, Ohio 45030

| No. de Ref. | Descripción                       | Número del Repuesto | Ctd. |
|-------------|-----------------------------------|---------------------|------|
| 1           | Perno hex, M5 x 20                | △                   | 1    |
| 2           | Buje                              | SV585100AV          | 1    |
| 3           | Anillo en O                       | ●                   | 1    |
| 4           | Deflector del orificio de salida  | SV585300AV          | 1    |
| 5           | Cubierta de cabezal               | SV585400AV          | 1    |
| 6           | Arandela de resorte               | △                   | 4    |
| 7           | Perno hex, M5 x 30                | △                   | 4    |
| 8           | Empaque                           | SV585700AV          | 1    |
| 9           | Anillo de acero                   | ◆                   | 1    |
| 10          | Defensa de la válvula del cabezal | ◆                   | 1    |
| 11          | Resorte de compresión             | ◆                   | 1    |
| 12          | Anillo en O                       | ◆◆                  | 1    |
| 13          | Válvula de equilibrio             | ◆◆                  | 1    |
| 14          | Anillo en O                       | ◆◆                  | 2    |
| 15          | Collar                            | SV586400AV          | 1    |
| 16          | Anillo de revestimiento           | SV586500AV          | 1    |
| 17          | Anillo en O                       | ●                   | 1    |
| 18          | Sello del cilindro                | SV586700AV          | 1    |
| 19          | Anillo en O                       | ●                   | 1    |
| 20          | Cilindro                          | SV586900AV          | 1    |
| 21          | Anillo en O                       | ●                   | 1    |
| 22          | Anillo en O                       | ▲●                  | 1    |
| 23          | Pistón                            | ▲                   | 1    |
| 24          | Impulsor                          | ▲                   | 1    |
| 25          | Defensa                           | SV587400AV          | 1    |
| 26          | Boquilla (superior)               | SV587500AV          | 1    |
| 27          | Boquilla (inferior)               | ●                   | 1    |
| 28          | Cuerpo                            | --                  | 1    |
| 29          | Cubierta de la boquilla           | SV587800AV          | 1    |
| 30          | Pasador                           | SV587900AV          | 1    |
| 31          | Cubierta de la guía del impulsor  | SV588000AV          | 1    |
| 32          | Anillo en O                       | ●                   | 1    |
| 33          | Blindaje lateral                  | SV588200AV          | 1    |
| 34          | Perno hex, M4 x 8                 | △                   | 1    |
| 35          | Elemento de contacto (WCE)        | SV588400AV          | 1    |
| 36          | Punta de protección               | SV588500AV          | 1    |
| 37          | Guía del impulsor                 | SV588600AV          | 1    |
| 38          | Separador                         | SV588700AV          | 1    |
| 39          | Perno hex, M5 x 25                | △                   | 2    |
| 40          | Perno hex, M4 x 10                | △                   | 1    |
| 41          | Tuerca                            | SV589000AV          | 3    |
| 42          | Cargador                          | --                  | 1    |
| 43          | Elemento de conexión              | SV589200AV          | 1    |
| 44          | Guía de los clavos                | SV589300AV          | 1    |
| 45          | Cubierta del cargador             | SV589400AV          | 1    |
| 46          | Perno hex, M5 x 20                | △                   | 1    |
| 47          | Pasador                           | □                   | 1    |
| 48          | Cojinete                          | □                   | 1    |
| 49          | Resorte de torsión                | □                   | 1    |
| 50          | Impulsor                          | □                   | 1    |

| No. de Ref. | Descripción                                 | Número del Repuesto | Ctd. |
|-------------|---|---------------------|------|
| 51          | Resorte de torsión                          | □                   | 1    |
| 52          | Pasador                                     | □                   | 1    |
| 53          | Cubierta del impulsor                       | □                   | 1    |
| 54          | Casquillo de alineación del resorte         | SV590300AV          | 1    |
| 55          | Resorte de torsión                          | SV590400AV          | 1    |
| 56          | Botón de liberación rápida                  | SV590500AV          | 1    |
| 57          | Cubierta de liberación                      | SV590600AV          | 1    |
| 58          | Arandela de resorte                         | △                   | 1    |
| 59          | Perno hex, M4 x 18                          | △                   | 1    |
| 60          | Pasador                                     | SV590900AV          | 3    |
| 61          | Sello interno                               | ■●                  | 1    |
| 62          | Cuerpo de la válvula (superior)             | SV591100AV          | 1    |
| 63          | Resorte de la válvula del gatillo           | ■●                  | 1    |
| 64          | Anillo en O                                 | ■●                  | 2    |
| 65          | Vástago de la válvula del gatillo           | SV591400AV          | 1    |
| 66          | Cuerpo de la válvula (inferior)             | SV591500AV          | 1    |
| 67          | Anillo en O                                 | ■●                  | 1    |
| 68          | Marco de la guía de control de profundidad  | SV591700AV          | 1    |
| 69          | Resorte del elemento de contacto            | SV591800AV          | 1    |
| 70          | Cuerpo de la guía de control de profundidad | SV591900AV          | 1    |
| 71          | Anillo de seguridad                         | SV592000AV          | 1    |
| 72          | Tuerca de ajuste de profundidad             | SV592100AV          | 1    |
| 73          | Tornillo                                    | SV592200AV          | 1    |
| 74          | Bola de acero                               | SV592300AV          | 2    |
| 75          | Resorte                                     | SV592400AV          | 1    |
| 76          | Resorte del gatillo                         | ▼                   | 1    |
| 77          | Placa del gatillo                           | ▼                   | 1    |
| 78          | Gatillo                                     | ▼                   | 1    |
| 79          | Pasador de resorte                          | ▼                   | 1    |
| 80          | Mango                                       | SV592900AV          | 1    |
| 81          | Anillo en O                                 | ●                   | 1    |
| 82          | Tapa de entrada                             | SV593100AV          | 1    |
| 83          | Cubierta del extremo                        | SV593200AV          | 1    |
| 84          | Aro del pistón de plástico                  | ▲                   | 1    |

**JUEGOS DE REPUESTOS**

|   |   |            |
|---|---|------------|
| ▲ | Juego de piezas del impulsor  | SKN08500AV |
| ■ | Juego de anillos en o de la válvula del gatillo                     | SKN08600AV |
| ● | Juego completo de anillos en O de repuestos                         | SKN08700AV |
| ◆ | Juego de la válvula de la culata del pistón                         | SKN08800AV |
| ▼ | Juego de ensamble del gatillo                                       | SKN08900AV |
| □ | Juego de impulsión  | SKN09000AV |
| △ | Artículo estándar de ferretería - disponible en su ferretería local |            |



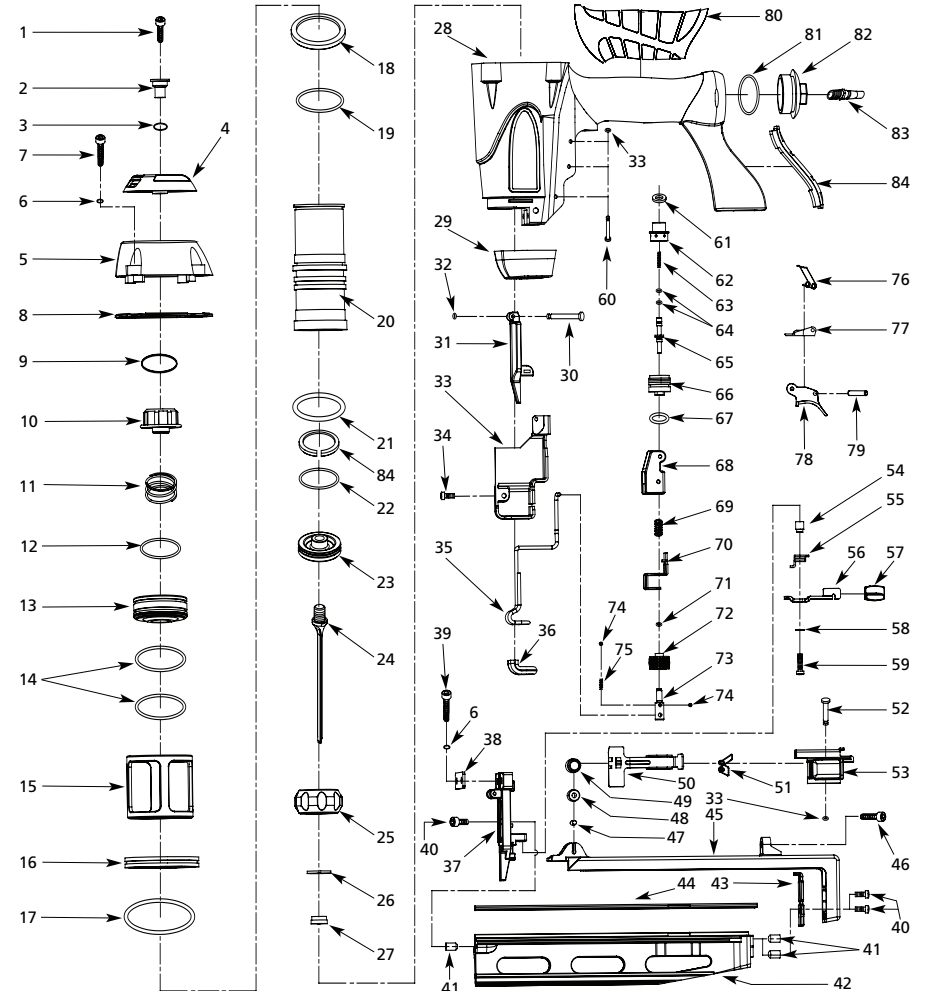
**2-1/2" 16g Straight Finish Nailer**

**Cloueuse Droite de Finition**  
jauge 16 - 6,4 cm

**Clavadora Derecha para Acabados**  
cal. 16 - 6,4 cm

**Replacement Parts Manual**  
**Manuel de Pièces de Rechange**  
**Lista de Repuestos**

MXN20100



## For Replacement Parts, call 1-800-241-5858

Please provide following information:

- Model number
- Serial number (if any)
- Part description and number as shown in parts list

Address any correspondence to:

Parts Department  
100 Production Drive  
Harrison, Ohio 45030

| Ref. No. | Description                | Part Number | Qty. |
|----------|----------------------------|-------------|------|
| 1        | Hex. Bolt, M5 x 20         | △           | 1    |
| 2        | Bushing                    | SV585100AV  | 1    |
| 3        | O-Ring                     | ●           | 1    |
| 4        | Exhaust deflector          | SV585300AV  | 1    |
| 5        | Head cap                   | SV585400AV  | 1    |
| 6        | Spring washer              | △           | 4    |
| 7        | Hex. Bolt, M5 x 30         | △           | 4    |
| 8        | Gasket                     | SV585700AV  | 1    |
| 9        | Steel ring                 | ◆           | 1    |
| 10       | Head valve bumper          | ◆           | 1    |
| 11       | Compression spring         | ◆           | 1    |
| 12       | O-Ring                     | ◆◆          | 1    |
| 13       | Balance valve              | ◆◆          | 1    |
| 14       | O-Ring                     | ◆◆          | 2    |
| 15       | Collar                     | SV586400AV  | 1    |
| 16       | Lining Ring                | SV586500AV  | 1    |
| 17       | O-Ring                     | ●           | 1    |
| 18       | Cylinder seal              | SV586700AV  | 1    |
| 19       | O-Ring                     | ●           | 1    |
| 20       | Cylinder                   | SV586900AV  | 1    |
| 21       | O-Ring                     | ●           | 1    |
| 22       | O-Ring                     | ▲●          | 1    |
| 23       | Piston                     | ▲           | 1    |
| 24       | Driver                     | ▲           | 1    |
| 25       | Bumper                     | SV587400AV  | 1    |
| 26       | Nozzle (Upper)             | SV587500AV  | 1    |
| 27       | Nozzle (Lower)             | ●           | 1    |
| 28       | Body                       | --          | 1    |
| 29       | Nozzle shield              | SV587800AV  | 1    |
| 30       | Pin                        | SV587900AV  | 1    |
| 31       | Driver guide cover         | SV588000AV  | 1    |
| 32       | O-Ring                     | ●           | 1    |
| 33       | Side shield                | SV588200AV  | 1    |
| 34       | Hex. Bolt, M4 x 8          | △           | 1    |
| 35       | Work contact element (WCE) | SV588400AV  | 1    |
| 36       | No-Mar Tip                 | SV588500AV  | 1    |
| 37       | Driver guide               | SV588600AV  | 1    |
| 38       | Spacer                     | SV588700AV  | 1    |
| 39       | Hex. Bolt, M5 x 25         | △           | 2    |
| 40       | Hex. Bolt, M4 x 10         | △           | 1    |
| 41       | Nut                        | SV589000AV  | 3    |
| 42       | Magazine                   | --          | 1    |
| 43       | Connect element            | SV589200AV  | 1    |
| 44       | Nail guide                 | SV589300AV  | 1    |
| 45       | Magazine cover             | SV589400AV  | 1    |
| 46       | Hex. Bolt, M5 x 20         | △           | 1    |
| 47       | Pin                        | □           | 1    |
| 48       | Bearing                    | □           | 1    |
| 49       | Torsion spring             | □           | 1    |
| 50       | Pusher                     | □           | 1    |

| Ref. No. | Description               | Part Number | Qty. |
|----------|---------------------------|-------------|------|
| 51       | Twist spring              | □           | 1    |
| 52       | Pin                       | □           | 1    |
| 53       | Pusher housing            | □           | 1    |
| 54       | Spring alignment bushing  | SV590300AV  | 1    |
| 55       | Twist spring              | SV590400AV  | 1    |
| 56       | Quick release button      | SV590500AV  | 1    |
| 57       | Release cover             | SV590600AV  | 1    |
| 58       | Spring washer             | △           | 1    |
| 59       | Hex. Bolt, M4 x 18        | △           | 1    |
| 60       | Pin                       | SV590900AV  | 3    |
| 61       | Inner seal                | ■●          | 1    |
| 62       | Valve body (Upper)        | SV591100AV  | 1    |
| 63       | Trigger valve spring      | ■●          | 1    |
| 64       | O-Ring                    | ■●          | 2    |
| 65       | Trigger valve stem        | SV591400AV  | 1    |
| 66       | Valve body (Lower)        | SV591500AV  | 1    |
| 67       | O-Ring                    | ■●          | 1    |
| 68       | Depth control guide frame | SV591700AV  | 1    |
| 69       | WCE spring                | SV591800AV  | 1    |
| 70       | Depth control guide body  | SV591900AV  | 1    |
| 71       | Stop ring                 | SV592000AV  | 1    |
| 72       | Depth adjusting nut       | SV592100AV  | 1    |
| 73       | Screw                     | SV592200AV  | 1    |
| 74       | Steel ball                | SV592300AV  | 2    |
| 75       | Spring                    | SV592400AV  | 1    |
| 76       | Trigger spring            | ▼           | 1    |
| 77       | Trigger plate             | ▼           | 1    |
| 78       | Trigger                   | ▼           | 1    |
| 79       | Spring pin                | ▼           | 1    |
| 80       | Grip                      | SV592900AV  | 1    |
| 81       | O-Ring                    | ●           | 1    |
| 82       | Inlet cap                 | SV593100AV  | 1    |
| 83       | End cover                 | SV593200AV  | 1    |
| 84       | Plastic piston ring       | ▲           | 1    |

### REPLACEMENT PARTS KITS

|   |                                 |            |
|---|---------------------------------|------------|
| ▲ | Driver Kit                      | SKN08500AV |
| ■ | Trigger Valve O-Ring Kit        | SKN08600AV |
| ● | Complete O-Ring Replacement Kit | SKN08700AV |
| ◆ | Head Valve Piston Kit           | SKN08800AV |
| ▼ | Trigger Assembly Kit            | SKN08900AV |
| □ | Pusher Kit                      | SKN09000AV |

△ Standard hardware item - available at your local hardware store

## Pour Pièces De Rechange, appeler 1-800-241-5858

S'il vous plaît fournir l'information suivante:

- Numéro de Modèle
- Numéro de série (si présent)
- Description et numéro de la pièce

Correspondance:

Parts Department  
100 Production Drive  
Harrison, Ohio 45030

| N° de Réf. | Description                       | N° de Pièce | Qté. |
|------------|-----------------------------------|-------------|------|
| 1          | Boulon hexagonal, M5 x 20         | △           | 1    |
| 2          | Douille                           | SV585100AV  | 1    |
| 3          | Joint torique                     | ●           | 1    |
| 4          | Défecteur d'échappement           | SV585300AV  | 1    |
| 5          | Chapeau de tête                   | SV585400AV  | 1    |
| 6          | Rondelle élastique                | △           | 4    |
| 7          | Boulon hexagonal, M5 x 30         | △           | 4    |
| 8          | Joint d'étanchéité                | SV585700AV  | 1    |
| 9          | Bague d'acier                     | ◆           | 1    |
| 10         | Pare-chocs de soupape de tête     | ◆           | 1    |
| 11         | Ressort de compression            | ◆           | 1    |
| 12         | Joint torique                     | ◆◆          | 1    |
| 13         | Soupape d'équilibrage             | ◆◆          | 1    |
| 14         | Joint torique                     | ◆◆          | 2    |
| 15         | Collier                           | SV586400AV  | 1    |
| 16         | Bague de doublure                 | SV586500AV  | 1    |
| 17         | Joint torique                     | ●           | 1    |
| 18         | Joint de cylindre                 | SV586700AV  | 1    |
| 19         | Joint torique                     | ●           | 1    |
| 20         | Cylindre                          | SV586900AV  | 1    |
| 21         | Joint torique                     | ●           | 1    |
| 22         | Joint torique                     | ▲●          | 1    |
| 23         | Piston                            | ▲           | 1    |
| 24         | Appareil d'entraînement           | ▲           | 1    |
| 25         | Pare-chocs                        | SV587400AV  | 1    |
| 26         | Buse (supérieur)                  | SV587500AV  | 1    |
| 27         | Buse (inférieur)                  | ●           | 1    |
| 28         | Corps                             | --          | 1    |
| 29         | Écran de buse                     | SV587800AV  | 1    |
| 30         | Goupille                          | SV587900AV  | 1    |
| 31         | Couvercle du guide d'entraînement | SV588000AV  | 1    |
| 32         | Joint torique                     | ●           | 1    |
| 33         | Tamis latéral                     | SV588200AV  | 1    |
| 34         | Boulon hexagonal, M4 x 8          | △           | 1    |
| 35         | Pointe de contact (WCE)           | SV588400AV  | 1    |
| 36         | Embout anti-marque                | SV588500AV  | 1    |
| 37         | Guide d'entraînement              | SV588600AV  | 1    |
| 38         | Entretoise                        | SV588700AV  | 1    |
| 39         | Boulon hexagonal, M5 x 25         | △           | 2    |
| 40         | Boulon hexagonal, M4 x 10         | △           | 1    |
| 41         | Écrou                             | SV589000AV  | 3    |
| 42         | Chargeur                          | --          | 1    |
| 43         | Élément de raccord                | SV589200AV  | 1    |
| 44         | Guide de clous                    | SV589300AV  | 1    |
| 45         | Couvercle de chargeur             | SV589400AV  | 1    |
| 46         | Boulon hexagonal, M5 x 20         | △           | 1    |
| 47         | Goupille                          | □           | 1    |
| 48         | Palier                            | □           | 1    |
| 49         | Ressort de torsion                | □           | 1    |
| 50         | Poussoir                          | □           | 1    |

| N° de Réf. | Description                              | N° de Pièce | Qté. |
|------------|--|-------------|------|
| 51         | Ressort à torsion                        | □           | 1    |
| 52         | Goupille                                 | □           | 1    |
| 53         | Carter de poussoir                       | □           | 1    |
| 54         | Douille d'alignement du ressort          | SV590300AV  | 1    |
| 55         | Ressort à torsion                        | SV590400AV  | 1    |
| 56         | Bouton de dégagement rapide              | SV590500AV  | 1    |
| 57         | Couvercle de dégagement                  | SV590600AV  | 1    |
| 58         | Rondelle élastique                       | △           | 1    |
| 59         | Boulon hexagonal, M4 x 18                | △           | 1    |
| 60         | Goupille                                 | SV590900AV  | 3    |
| 61         | Scellement intérieur                     | ■●          | 1    |
| 62         | Corps de soupape (supérieur)             | SV591100AV  | 1    |
| 63         | Ressort de soupape de gâchette           | ■●          | 1    |
| 64         | Joint torique                            | ■●          | 2    |
| 65         | Tige de soupape de gâchette              | SV591400AV  | 1    |
| 66         | Corps de soupape (inférieur)             | SV591500AV  | 1    |
| 67         | Joint torique                            | ■●          | 1    |
| 68         | Câdre du guide de contrôle de profondeur | SV591700AV  | 1    |
| 69         | Ressort de pointe de contact             | SV591800AV  | 1    |
| 70         | Corps du guide de contrôle de profondeur | SV591900AV  | 1    |
| 71         | Bague d'arrêt                            | SV592000AV  | 1    |
| 72         | Écrou de réglage de profondeur           | SV592100AV  | 1    |
| 73         | Vis                                      | SV592200AV  | 1    |
| 74         | Bille d'acier                            | SV592300AV  | 2    |
| 75         | Ressort                                  | SV592400AV  | 1    |
| 76         | Ressort de gâchette                      | ▼           | 1    |
| 77         | Plaque de gâchette                       | ▼           | 1    |
| 78         | Gâchette                                 | ▼           | 1    |
| 79         | Goupille à ressort                       | ▼           | 1    |
| 80         | Manche                                   | SV592900AV  | 1    |
| 81         | Joint torique                            | ●           | 1    |
| 82         | Chapeau d'entrée                         | SV593100AV  | 1    |
| 83         | Couvercle d'extrémité                    | SV593200AV  | 1    |
| 84         | Bague de piston de plastique             | ▲           | 1    |

### NECESSAIRES DE PIÈCES DE RECHANGE

|   |   |            |
|---|---|------------|
| ▲ | Nécessaire d'entraînement                         | SKN08500AV |
| ■ | Trousse de joint torique de soupape de gâchette   | SKN08600AV |
| ● | Nécessaire de rechange complet de joints toriques | SKN08700AV |
| ◆ | Nécessaire de soupape de tête de piston           | SKN08800AV |
| ▼ | Trousse d'assemblage de la gâchette               | SKN08900AV |
| □ | Trousse du poussoir                               | SKN09000AV |

△ Article normal de quincaillerie - disponible à votre quincaillerie locale