

Para Ordenar Repuestos o Asistencia Técnica, Sírvase Llamar al Distribuidor Más Cercano a Su Domicilio

Sírvase darnos la siguiente información:

- Número del modelo
- Código impreso
- Descripción y número del repuesto según la lista de repuestos

Dirija toda la correspondencia a:

Campbell Hausfeld
Attn: Customer Service
100 Production Drive
Harrison, OH 45030 U.S.A.

| No. de Ref. | Descripción | Número del Repuesto | Ctd. |
|-------------|-------------------------------------|---------------------|------|
| 1 | Cubierta del orificio de salida | SV479100AV | 1 |
| 2 | Perno | SV479200AV | 4 |
| 3 | Arandela | SV479300AV | 4 |
| 4 | Cubierta del cuerpo | SV479400AV | 1 |
| 5 | Tope del orificio de salida | □ | 1 |
| 6 | Anillo en O | □ | 1 |
| 7 | Guía de la válvula | SV479700AV | 1 |
| 8 | Anillo en O | □ | 1 |
| 9 | Resorte | SV479900AV | 1 |
| 10 | Pistón de la válvula | ◆ | 1 |
| 11 | Anillo en O | □ | 1 |
| 12 | Anillo en O | □ | 1 |
| 13 | Anillo en O | □ | 1 |
| 14 | Anillo en O | □ | 1 |
| 15 | Cabeza para la paleta de impulsión | ● | 1 |
| 16 | Pasador | ● | 1 |
| 17 | Paleta de impulsión | ● | 1 |
| 18 | Anillo de presión | SV480800AV | 1 |
| 19 | Anillo en O | □ | 1 |
| 20 | Anillo en O | SV481000AV | 1 |
| 21 | Cilindro | SV481100AV | 1 |
| 22 | Tope del pistón principal | SV481200AV | 1 |
| 23 | Sello | □ | 1 |
| 24 | Caja del cuerpo | SV481400AV | 1 |
| 25 | Guía de impulsión plástica | SV481500AV | 1 |
| 26 | Cubierta plástica frontal | SV481600AV | 1 |
| 27 | Arandela | □ | 1 |
| 28 | Separador de la válvula del gatillo | SV481800AV | 1 |
| 29 | Resorte | SV481900AV | 1 |
| 30 | Anillo en O | □ | 2 |
| 31 | Vástago de la válvula del gatillo | SV482100AV | 1 |
| 32 | Cubierta del interruptor neumático | SV482200AV | 1 |
| 33 | Anillo en O | □ | 1 |
| 34 | Resorte del gatillo | ▼ | 1 |
| 35 | Gatillo secundario | ▼ | 1 |
| 36 | Pasador de resorte | ▼ | 1 |
| 37 | Gatillo principal | ▼ | 1 |
| 38 | Botón | ▼ | 1 |
| 39 | Anillo en O | □ | 1 |
| 40 | Protección del brazo de contacto | SV483000AV | 1 |
| 41 | Resorte | SV483100AV | 1 |
| 42 | Bague en E | SV483200AV | 1 |
| 43 | Brazo de contacto superior | SV483300AV | 1 |
| 44 | Carrete ajustable | SV483400AV | 1 |
| 45 | Perno | SV483600AV | 1 |
| 46 | Brazo de contacto | SV483700AV | 1 |
| 47 | Cubierta de protección | SV483800AV | 1 |
| 48 | Tapa trasera del cuerpo | SV483900AV | 1 |
| 49 | Anillo en O | SV484000AV | 1 |
| 50 | Perno | SV484100AV | 1 |
| 51 | Arandela | SV484200AV | 3 |
| 52 | Mango de goma | SV484300AV | 1 |
| 53 | Perno | SV484400AV | 1 |
| 54 | Cubierta plástica | SV484500AV | 1 |

| No. de Ref. | Descripción | Número del Repuesto | Ctd. |
|-------------|-------------------------------------|---------------------|------|
| 55 | Guía de la broca principal superior | SV484600AV | 1 |
| 56 | Perno | SV484700AV | 2 |
| 57 | Anillo en O | SV484800AV | 1 |
| 58 | Guía de la broca principal | SV484900AV | 1 |
| 59 | Pasador del conector | SV485000AV | 1 |
| 60 | Cubierta de liberación rápida | SV485100AV | 1 |
| 61 | Perno | SV485200AV | 1 |
| 62 | Arandela | SV485300AV | 1 |
| 63 | Relevador del gatillo | SV485400AV | 1 |
| 64 | Anillo | SV485500AV | 1 |
| 65 | Resorte | SV485600AV | 1 |
| 66 | Guía de la broca secundaria | SV485700AV | 1 |
| 67 | Pasador de resorte | SV485800AV | 1 |
| 68 | Perno | SV485900AV | 1 |
| 69 | Cubierta del cargador | SV486000AV | 1 |
| 70 | Accesorio de impulsión | ▲ | 1 |
| 71 | Perno | ▲ | 1 |
| 72 | Resorte | SV486300AV | 1 |
| 73 | Accesorio de impulsión | ▲ | 1 |
| 74 | Impulsor | ▲ | 1 |
| 75 | Perno | SV486600AV | 1 |
| 76 | Arandela | SV486700AV | 1 |
| 77 | Placa guía del cargador | SV486800AV | 1 |
| 78 | Placa de acero | SV486900AV | 1 |
| 79 | Cubierta del brazo de contacto | SV487000AV | 1 |
| 80 | Anillo en O | SV487100AV | 1 |
| 81 | Botón de llave | SV487200AV | 1 |
| 82 | llave | SV487300AV | 1 |
| 83 | Tuerca | SV487400AV | 1 |
| 84 | Arandela | SV487500AV | 1 |
| 85 | Fiador del alimentador | SV487600AV | 1 |
| 86 | Eje | SV487700AV | 1 |
| 87 | Resorte | SV487800AV | 1 |
| 88 | Perno | SV487900AV | 1 |
| 89 | Tope | SV488000AV | 1 |
| 90 | Perno | SV488100AV | 2 |
| 91 | Accesorio de retención | SV488200AV | 1 |
| 92 | Anillo en O | □ | 1 |
| 93 | Plaqueta | SV488400AV | 1 |
| 94 | Aro del pistón principal | ● | 1 |
| 95 | Anillo en O | □ | 1 |
| 96 | Pistón principal | ● | 1 |
| 97 | Etiqueta adhesiva Polydome | SV488800AV | 2 |

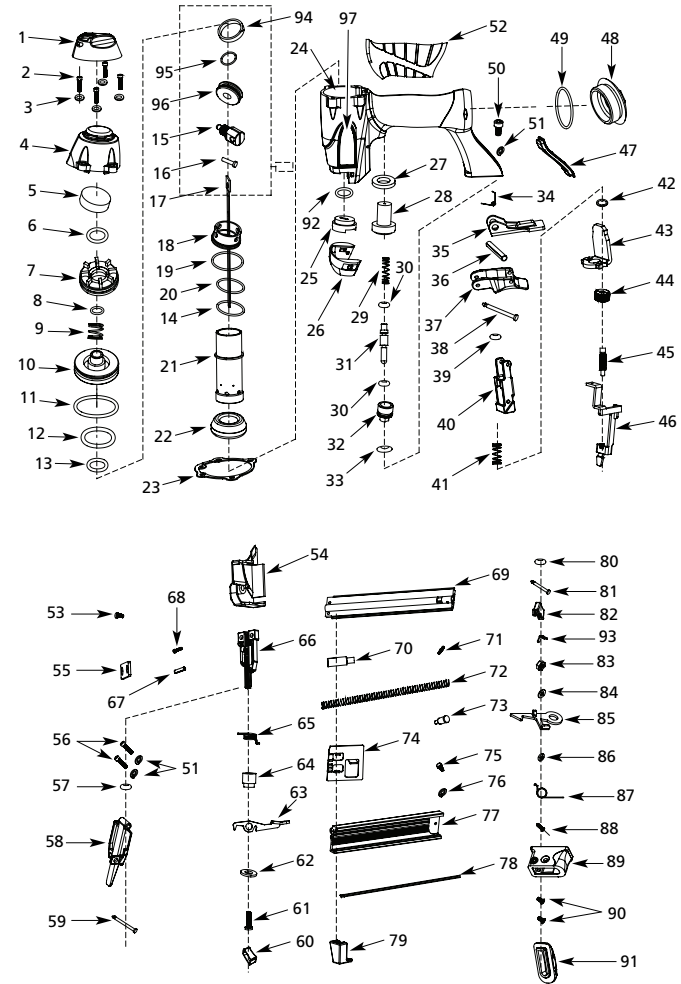
JUEGOS DE PIEZAS DE REPUESTO

- ▲ Ensamblaje del disparador SKN00100AV
- Juego de anillos en o de la válvula del gatillo SKN00200AV
- Juego del impulsor SKN00300AV
- ◆ Ensamblaje de válvula de equilibrio SKN00400AV
- ▼ Ensamblaje del gatillo SKN00500AV
- Juego completo de anillos en O de repuestos SKN00600AV



**Brad Nailer
Cloueuse à clous sans tête
Clavadora para acabado**

Replacement Parts Manual
Manuel de pièces de rechange
Lista de Repuestos



For Replacement Parts or Technical Assistance, call 1-800-543-6400

Please provide following information:

- Model number
- Serial number (if any)
- Part description and number as shown in parts list

Address any correspondence to:

Campbell Hausfeld
Attn: Customer Service
100 Production Drive
Harrison, OH 45030 U.S.A.

| Ref. No. | Description | Part Number | Qty. |
|----------|-----------------------|-------------|------|
| 1 | Exhaust cover | SV479100AV | 1 |
| 2 | Bolt | SV479200AV | 4 |
| 3 | Washer | SV479300AV | 4 |
| 4 | Body cap | SV479400AV | 1 |
| 5 | Exhaust bumper | □ | 1 |
| 6 | O-ring | □ | 1 |
| 7 | Valve guide | SV479700AV | 1 |
| 8 | O-ring | □◆ | 1 |
| 9 | Spring | SV479900AV | 1 |
| 10 | Valve piston | ◆ | 1 |
| 11 | O-ring | □◆ | 1 |
| 12 | O-ring | □◆ | 1 |
| 13 | O-ring | □◆ | 1 |
| 14 | O-ring | □ | 1 |
| 15 | Head for driver blade | ● | 1 |
| 16 | Pin | ● | 1 |
| 17 | Driver blade | ● | 1 |
| 18 | Press ring | SV480800AV | 1 |
| 19 | O-ring | □ | 1 |
| 20 | O-ring | SV481000AV | 1 |
| 21 | Cylinder | SV481100AV | 1 |
| 22 | Main piston stop | SV481200AV | 1 |
| 23 | Seal | □ | 1 |
| 24 | Body housing | SV481400AV | 1 |
| 25 | Plastic driver guide | SV481500AV | 1 |
| 26 | Front plastic cover | SV481600AV | 1 |
| 27 | Washer | □■ | 1 |
| 28 | Trigger valve cage | SV481800AV | 1 |
| 29 | Spring | SV481900AV | 1 |
| 30 | O-ring | □■ | 2 |
| 31 | Trigger valve stem | SV482100AV | 1 |
| 32 | Air switch cover | SV482200AV | 1 |
| 33 | O-ring | □ | 1 |
| 34 | Trigger spring | ▼ | 1 |
| 35 | Secondary trigger | ▼ | 1 |
| 36 | Spring pin | ▼ | 1 |
| 37 | Main trigger | ▼ | 1 |
| 38 | Button | ▼ | 1 |
| 39 | O-ring | □▼■ | 1 |
| 40 | Contact arm guard | SV483000AV | 1 |
| 41 | Spring | SV483100AV | 1 |
| 42 | E-ring | SV483200AV | 1 |
| 43 | Upper contact arm | SV483300AV | 1 |
| 44 | Adjustable reel | SV483400AV | 1 |
| 45 | Bolt | SV483600AV | 1 |
| 46 | Contact arm | SV483700AV | 1 |
| 47 | Guard cover | SV483800AV | 1 |
| 48 | Rear body cap | SV483900AV | 1 |
| 49 | O-ring | SV484000AV | 1 |
| 50 | Bolt | SV484100AV | 1 |
| 51 | Washer | SV484200AV | 3 |
| 52 | Rubber grip | SV484300AV | 1 |
| 53 | Bolt | SV484400AV | 1 |
| 54 | Plastic cover | SV484500AV | 1 |

| Ref. No. | Description | Part Number | Qty. |
|----------|----------------------|-------------|------|
| 55 | Upper main bit guide | SV484600AV | 1 |
| 56 | Bolt | SV484700AV | 2 |
| 57 | O-ring | SV484800AV | 1 |
| 58 | Main bit guide | SV484900AV | 1 |
| 59 | Connector pin | SV485000AV | 1 |
| 60 | Quick release cover | SV485100AV | 1 |
| 61 | Bolt | SV485200AV | 1 |
| 62 | Washer | SV485300AV | 1 |
| 63 | Release trigger | SV485400AV | 1 |
| 64 | Ring | SV485500AV | 1 |
| 65 | Spring | SV485600AV | 1 |
| 66 | Secondary bit guide | SV485700AV | 1 |
| 67 | Spring pin | SV485800AV | 1 |
| 68 | Bolt | SV485900AV | 1 |
| 69 | Magazine cover | SV486000AV | 1 |
| 70 | Pusher attachment | ▲ | 1 |
| 71 | Bolt | ▲ | 1 |
| 72 | Spring | SV486300AV | 1 |
| 73 | Pusher attachment | ▲ | 1 |
| 74 | Pusher | ▲ | 1 |
| 75 | Bolt | SV486600AV | 1 |
| 76 | Washer | SV486700AV | 1 |
| 77 | Magazine guide board | SV486800AV | 1 |
| 78 | Steel plate | SV486900AV | 1 |
| 79 | Contact arm cover | SV487000AV | 1 |
| 80 | O-ring | SV487100AV | 1 |
| 81 | Key button | SV487200AV | 1 |
| 82 | Key | SV487300AV | 1 |
| 83 | Nut | SV487400AV | 1 |
| 84 | Washer | SV487500AV | 1 |
| 85 | Pawl of feeder | SV487600AV | 1 |
| 86 | Shaft | SV487700AV | 1 |
| 87 | Spring | SV487800AV | 1 |
| 88 | Bolt | SV487900AV | 1 |
| 89 | Stopper | SV488000AV | 1 |
| 90 | Bolt | SV488100AV | 2 |
| 91 | Stopper attachment | SV488200AV | 1 |
| 92 | O-ring | □ | 1 |
| 93 | Scaleboard | SV488400AV | 1 |
| 94 | Main piston ring | ●□ | 1 |
| 95 | O-ring | ●□ | 1 |
| 96 | Main piston | ● | 1 |
| 97 | Polydome decal | SV488800AV | 2 |

REPLACEMENT PARTS KITS

| | | |
|---|---------------------------------|------------|
| ▲ | Pusher assembly | SKN00100AV |
| ■ | Trigger valve o-ring kit | SKN00200AV |
| ● | Driver kit | SKN00300AV |
| ◆ | Balance valve assembly | SKN00400AV |
| ▼ | Trigger assembly | SKN00500AV |
| □ | Complete o-ring replacement kit | SKN00600AV |

Pour Pièces de Rechange ou assistance technique, appeler 1-800-543-6400

S'il vous plaît fournir l'information suivante:

- Numéro de Modèle
- Numéro de série (si présent)
- Description et numéro de la pièce

Adresser toute correspondance à

Campbell Hausfeld
Attn: Customer Service
100 Production Drive
Harrison, OH 45030 U.S.A.

| N° de Réf. | Description | N° de Pièce | Qté. |
|------------|---|-------------|------|
| 1 | Couvercle d'échappement | SV479100AV | 1 |
| 2 | Boulon | SV479200AV | 4 |
| 3 | Rondelle | SV479300AV | 4 |
| 4 | Capuchon du corps | SV479400AV | 1 |
| 5 | Butoir d'échappement | □ | 1 |
| 6 | Joint torique | □ | 1 |
| 7 | Guide de soupape | SV479700AV | 1 |
| 8 | Joint torique | □◆ | 1 |
| 9 | Ressort | SV479900AV | 1 |
| 10 | Piston de soupape | ◆ | 1 |
| 11 | Joint torique | □◆ | 1 |
| 12 | Joint torique | □◆ | 1 |
| 13 | Joint torique | □◆ | 1 |
| 14 | Joint torique | □ | 1 |
| 15 | Tête de lame d'entraînement | ● | 1 |
| 16 | Goupille | ● | 1 |
| 17 | Lame d'entraînement | ● | 1 |
| 18 | Anneau emmanché | SV480800AV | 1 |
| 19 | Joint torique | □ | 1 |
| 20 | Joint torique | SV481000AV | 1 |
| 21 | Cylindre | SV481100AV | 1 |
| 22 | Buté de piston principale | SV481200AV | 1 |
| 23 | Joint | □ | 1 |
| 24 | Bâti du moteur | SV481400AV | 1 |
| 25 | Guide d'entraînement de plastique | SV481500AV | 1 |
| 26 | Couvercle avant de plastique | SV481600AV | 1 |
| 27 | Rondelle | □■ | 1 |
| 28 | Lanterne de soupape de gâchette | SV481800AV | 1 |
| 29 | Ressort | SV481900AV | 1 |
| 30 | Joint torique | □■ | 2 |
| 31 | Tige de soupape de gâchette | SV482100AV | 1 |
| 32 | Couvercle d'interrupteur de débit d'air | SV482200AV | 1 |
| 33 | Joint torique | □■ | 1 |
| 34 | Ressort de gâchette | ▼ | 1 |
| 35 | Gâchette secondaire | ▼ | 1 |
| 36 | Goupille à ressort | ▼ | 1 |
| 37 | Gâchette principale | ▼ | 1 |
| 38 | Bouton | ▼ | 1 |
| 39 | Joint torique | □▼■ | 1 |
| 40 | Protecteur de bras de contact | SV483000AV | 1 |
| 41 | Ressort | SV483100AV | 1 |
| 42 | Bague en E | SV483200AV | 1 |
| 43 | Bras de contact supérieur | SV483300AV | 1 |
| 44 | Dévidoir réglable | SV483400AV | 1 |
| 45 | Boulon | SV483600AV | 1 |
| 46 | Bras de contact | SV483700AV | 1 |
| 47 | Couvercle protecteur | SV483800AV | 1 |
| 48 | Capuchon du corps arrière | SV483900AV | 1 |
| 49 | Joint torique | SV484000AV | 1 |
| 50 | Boulon | SV484100AV | 1 |
| 51 | Rondelle | SV484200AV | 3 |
| 52 | Prise de caoutchouc | SV484300AV | 1 |
| 53 | Boulon | SV484400AV | 1 |
| 54 | Couvercle de plastique | SV484500AV | 1 |

| N° de Réf. | Description | N° de Pièce | Qté. |
|------------|------------------------------------|-------------|------|
| 55 | Guide de foret principal supérieur | SV484600AV | 1 |
| 56 | Boulon | SV484700AV | 2 |
| 57 | Joint torique | SV484800AV | 1 |
| 58 | Guide de foret principal | SV484900AV | 1 |
| 59 | Goupille de connecteur | SV485000AV | 1 |
| 60 | Couvercle de dégagement rapide | SV485100AV | 1 |
| 61 | Boulon | SV485200AV | 1 |
| 62 | Rondelle | SV485300AV | 1 |
| 63 | Gâchette de dégagement | SV485400AV | 1 |
| 64 | Bague | SV485500AV | 1 |
| 65 | Ressort | SV485600AV | 1 |
| 66 | Guide de foret secondaire | SV485700AV | 1 |
| 67 | Goupille à ressort | SV485800AV | 1 |
| 68 | Boulon | SV485900AV | 1 |
| 69 | Couvercle de chargeur | SV486000AV | 1 |
| 70 | Accessoire poussoir | ▲ | 1 |
| 71 | Boulon | ▲ | 1 |
| 72 | Ressort | SV486300AV | 1 |
| 73 | Accessoire poussoir | ▲ | 1 |
| 74 | Poussoir | ▲ | 1 |
| 75 | Boulon | SV486600AV | 1 |
| 76 | Rondelle | SV486700AV | 1 |
| 77 | Plateau du guide de chargeur | SV486800AV | 1 |
| 78 | Plaque d'acier | SV486900AV | 1 |
| 79 | Couvercle de bras contact | SV487000AV | 1 |
| 80 | Joint torique | SV487100AV | 1 |
| 81 | Bouton de vis de réglage | SV487200AV | 1 |
| 82 | Clé | SV487300AV | 1 |
| 83 | Écrou | SV487400AV | 1 |
| 84 | Rondelle | SV487500AV | 1 |
| 85 | Cliquet du distributeur | SV487600AV | 1 |
| 86 | Arbre | SV487700AV | 1 |
| 87 | Ressort | SV487800AV | 1 |
| 88 | Boulon | SV487900AV | 1 |
| 89 | Butoir | SV488000AV | 1 |
| 90 | Boulon | SV488100AV | 2 |
| 91 | Accessoire d'obturation | SV488200AV | 1 |
| 92 | Joint torique | □ | 1 |
| 93 | Échelle | SV488400AV | 1 |
| 94 | Bague de piston principal | ●□ | 1 |
| 95 | Joint torique | ●□ | 1 |
| 96 | Piston principale | ● | 1 |
| 97 | Décal de polydôme | SV488800AV | 2 |

TROUSSES DE PIÈCES DE RECHANGE

| | | |
|---|---|------------|
| ▲ | Poussoir équipé | SKN00100AV |
| ■ | Trousse de joint torique de soupape de gâchette | SKN00200AV |
| ● | Trousse d'entraînement | SKN00300AV |
| ◆ | Montage de soupape d'équilibrage | SKN00400AV |
| ▼ | Gâchette équipée | SKN00500AV |
| □ | Nécessaire de rechange complet de joints toriques | SKN00600AV |