

VT616504, VT618204, VT623503, VT627102 y VT627802

Para Ordenar Repuestos Sírvase Llamar al Distribuidor Más Cercano a Su Domicilio

Sírvase darnos la siguiente información:

- Número del modelo
- Número de Serie (de haberlo)
- Descripción y número del repuesto según la lista de repuestos

Puede escribirnos a:

Campbell Hausfeld
100 Production Drive
Harrison, OH 45030 U.S.A.

| No. de Ref. | Descripción | Repuestos para los Modelos: VT616504 | VT618204 | VT623503 | VT627102 | VT627802 | Ctd. |
|-------------|---|---|------------|------------|------------|------------|------|
| 1 | Tanque | AR040400BR | AR044800BR | AR040500BR | AR040500BR | AR044800BR | 1 |
| 2 | Llave de salida | D-1401 | D-1401 | D-1401 | D-1401 | D-1401 | 1 |
| 3 | Pata | ST113000AV | ST041600AV | ST041600AV | ST041600AV | ST041600AV | 2 |
| 4 | Tuerca | ST146000AV | ST146000AV | ST146000AV | ST146000AV | ST146000AV | 8 |
| 5 | Rueda | WA004100AV | WA004000AV | WA004000AV | WA004000AV | WA004000AV | 2 |
| 6 | Perno del eje | — | ST033400AV | ST033400AV | ST033400AV | ST033400AV | 2 |
| 7 | Tuerca hex | — | ST033500AV | ST033500AV | ST033500AV | ST033500AV | 2 |
| 8 | Mango | HL001801BH | HL001801BH | HL001801BH | HL001801BH | HL001801BH | 1 |
| 9 | Tornillo del mango | ST073236AV | ST073236AV | ST073236AV | ST073236AV | ST073236AV | 1 |
| 10 | Presostato | CW207576AV | CW207576AV | CW207576AV | CW207576AV | CW207576AV | 1 |
| 11 | Relieve de tensión | CW000702AV | CW000702AV | CW000702AV | CW000702AV | CW000702AV | 1 |
| 12 | Cordón del motor | EC012800AV | EC012800AV | EC012800AV | EC012800AV | EC012800AV | 1 |
| 13 | Tornillo del relieve de tensión | ST074418AV | ST074418AV | ST074418AV | ST074418AV | ST074418AV | 1 |
| 14 | Cordón eléctrico | EC012901AV | EC012901AV | EC012901AV | EC012901AV | EC012901AV | 1 |
| 15 | Válvula de seguridad ASME | V-215100AV | V-215100AV | V-215100AV | V-215100AV | V-215100AV | 1 |
| 16 | Niple | HF002401AV | HF002401AV | HF002401AV | HF002401AV | HF002401AV | 1 |
| 17 | Manómetro de salida | GA016300AV | GA016300AV | GA016300AV | GA016300AV | GA016300AV | 2 |
| 19 | Válvula de desfogeo | CW000800AV | CW000800AV | CW000800AV | CW000800AV | CW000800AV | 1 |
| 20 | Válvula de chequeo | CV221502AJ | CV221502AJ | CV221502AJ | CV221502AJ | CV221502AJ | 1 |
| 21 | Tapa de compresión | ST067300AV | ST067300AV | ST067300AV | ST067300AV | ST067300AV | 1 |
| 22 | Tuerca de compresión | ST033001AV | ST033001AV | ST033001AV | ST033001AV | ST033001AV | 1 |
| 23 | Tubo de descarga | VT043600AP | VT043600AP | VT043600AP | VT043600AP | VT043600AP | 1 |
| 24 | Ajuste de empuje | ST081301AV | ST081301AV | ST081301AV | ST081301AV | ST081301AV | 1 |
| 25 | Tubo de desfogue | ST117801AV | ST117801AV | ST117801AV | ST117801AV | ST117801AV | 1 |
| 26 | Tapón para el drenaje de aceite | ST022300AV | ST022300AV | ST022300AV | ST022300AV | ST022300AV | 1 |
| 27 | Cabezal | VT470000KB | VT470000KB | VT470000KB | VT470000KB | VT470000KB | 1 |
| 28 | Tornillo hex | ST012800AV | ST012800AV | ST012800AV | ST012800AV | ST012800AV | 4 |
| 29 | Ensamblaje de compresión | ST018300AV | ST018300AV | ST018300AV | ST018300AV | ST018300AV | 1 |
| 30 | Tapa protectora de bandas (posterior) | BG217902AV | BG217902AV | BG217902AV | BG217902AV | BG217902AV | 1 |
| 31 | Tornillo autorrosante | ST042400AV | ST042400AV | ST042400AV | ST042400AV | ST042400AV | 3 |
| 32 | Tornillo autorrosante de 5mm x 25mm | ST073269AV | ST073269AV | ST073269AV | ST073269AV | ST073269AV | 1 |
| 33 | Volante | PU015900AG | PU015900AG | PU015900AG | PU015900AG | PU015900AG | 1 |
| 34 | Chaveta | KE000900AV | KE000900AV | KE000900AV | KE000900AV | KE000900AV | 1 |
| 35 | Tornillo | ST026200AV | ST026200AV | ST026200AV | ST026200AV | ST026200AV | 1 |
| 36 | Polea | PU012600AG | PU012600AG | PU012600AG | PU012700AG | PU012700AG | 1 |
| 37 | Tornillo | ST012200AV | ST012200AV | ST012200AV | ST012200AV | ST012200AV | 1 |
| 38 | Banda | BT020400AV | BT020400AV | BT020400AV | BT020400AV | BT020400AV | 1 |
| 39 | Tapa protectora de bandas (frontal) | BG217800AV | BG217800AV | BG217800AV | BG217800AV | BG217800AV | 1 |
| 40 | Tornillo | ST058502AV | ST058502AV | ST058502AV | ST058502AV | ST058502AV | 1 |
| 41 | Motor eléctrico | MC006101AJ | MC006101AJ | MC017301AJ | MC015401AJ | MC015401AJ | 1 |
| 42 | Chaveta | KE000903AV | KE000903AV | KE000903AV | KE000903AV | KE000903AV | 2 |
| 43 | Tornillo Hex | ST016000AV | ST016000AV | ST016000AV | ST016000AV | ST016000AV | 4 |
| 44 | Arandela | ST011200AV | ST011200AV | ST011200AV | ST011200AV | ST011200AV | 4 |
| 45 | Regulador | RE206203AV | RE206203AV | RE206203AV | RE206203AV | RE206203AV | 1 |
| 46 | Reductor | ST071407AV | ST071407AV | ST071407AV | ST071407AV | ST071407AV | 1 |
| 47 | Retenedor | ST063100AV | — | — | — | — | 2 |
| 48 | Δ Etiquetas de advertencia (3) | DK630000AV | DK630000AV | DK630000AV | DK630000AV | DK630000AV | 1 |
| 49 | Δ Reductor de orificio de inspección 3,31 cm x 6,4 mm (1 1/2" x 1/4") | PG150008AV | PG150008AV | PG150008AV | PG150008AV | PG150008AV | 2 |
| 50 | Δ Anillo en o para el orificio de inspección | ST070191AV | ST070191AV | ST070191AV | ST070191AV | ST070191AV | 2 |
| Δ | No se muestra | | | | | | |

www.campbellhausfeld.com

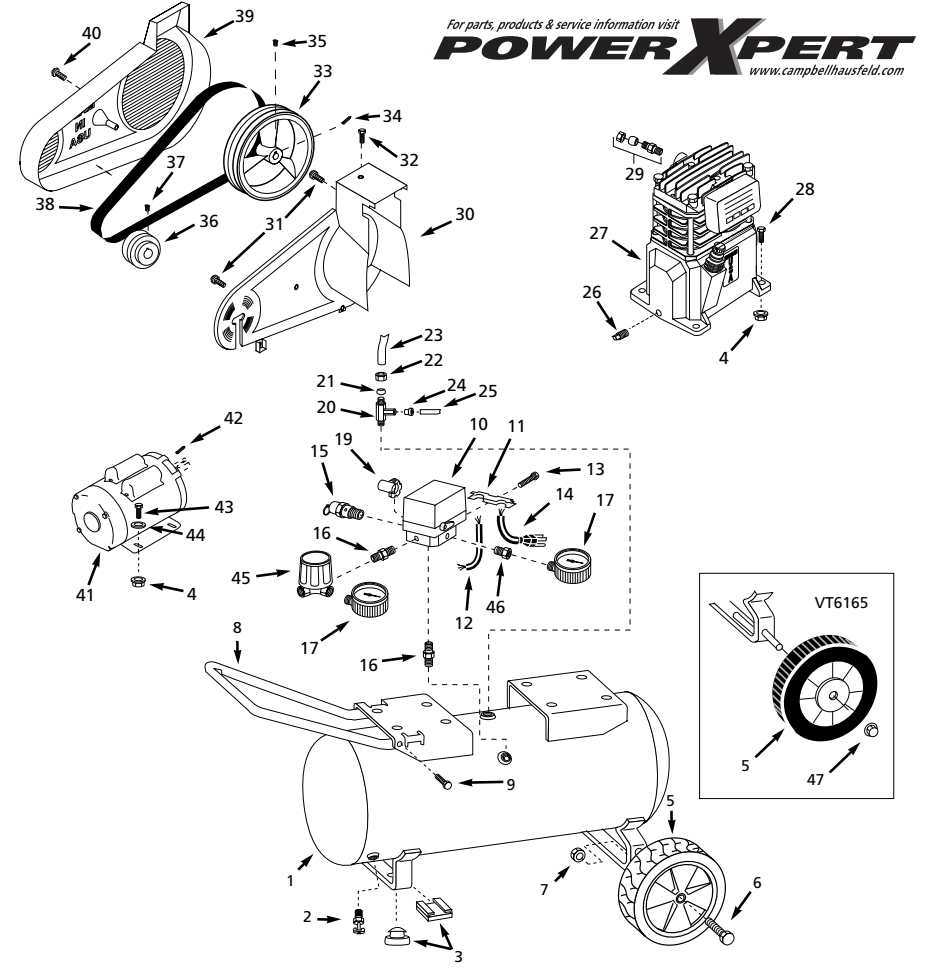


EXTREME DUTY

**Portable Air Compressors
Compresseurs D'Air Portatifs
Compressores de Aire Portátiles**

Replacement Parts List
Liste De Pièces De Remplacement
Lista de Repuestos

VT616504, VT618204, VT623503,
VT627102 & VT627802



For parts, products & service information visit
POWER XPERT
www.campbellhausfeld.com

For parts, product & service information
visit www.campbellhausfeld.com

IN227205AV 2/99

