

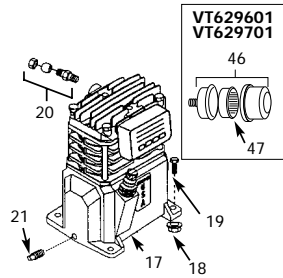
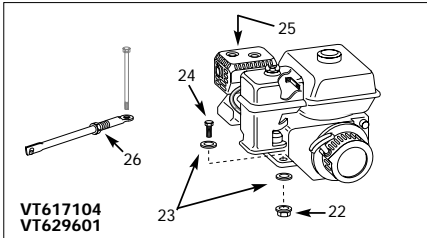
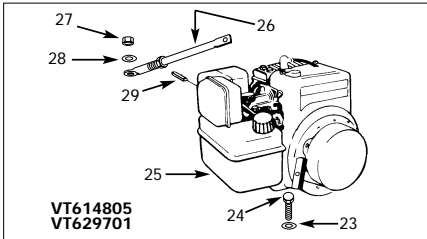


Contractor Air Compressors  
 Compresseurs D'Air Pour Entrepreneurs  
 Compresores de Aire Para Contratistas

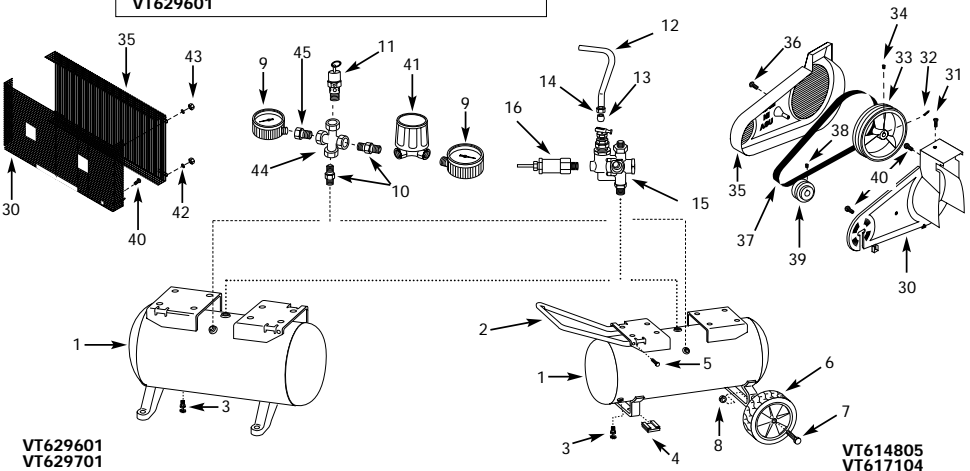
Replacement Parts List  
 Liste De Pièces De Remplacement  
 Lista de Repuestos

VT614805, VT617104, VT629601 & VT629701

For parts, products & service information visit  
**POWER XPERT**  
[www.campbellhausfeld.com](http://www.campbellhausfeld.com)



APPLIES TO ALL MODELS  
 POUR TOUS LES MODELES  
 PARA TODOS LOS MODELOS



VT614805, VT617104, VT629601 & VT629701

**For Replacement Parts, Call 1-800-543-6400**

Please provide following information:

- Model number
- Serial number (if any)
- Part description and number as shown in parts list

Address parts correspondence to:

Campbell Hausfeld  
100 Production Drive  
Harrison, OH 45030 U.S.A.

Ref. No.	Description	Part Number For VT614805	Models For VT617104	VT629601	VT629701	Qty.
1	Tank	AR048200CG	AR048200CG	AR034000CG	AR034000CG	1
2	Handle	HL001801BH	HL001801BH	—	—	1
3	Drain cock	D-1401	D-1401	D-1401	D-1401	1
4	Foot	ST041600AV	ST041600AV	—	—	2
5	Handle screw	ST073236AV	ST073236AV	—	—	1
6	Wheel	WA004000AV	WA004000AV	—	—	2
7	Axle bolt	ST033400AV	ST033400AV	—	—	2
8	Hex keps nut	ST033500AV	ST033500AV	—	—	2
9	Gauge	GA16300AV	GA16300AV	GA16300AV	GA16300AV	2
10	Nipple	HF002401AV	HF002401AV	HF002401AV	HF002401AV	2
11	ASME Safety valve	V-215100AV	V-215100AV	V-215100AV	V-215100AV	1
12	Discharge tube	VT045100AP	VT045100AP	VT045100AP	VT045100AP	1
13	Ferrule	ST067300AV	ST067300AV	ST067300AV	ST067300AV	1
14	Compression nut	ST033001AV	ST033001AV	ST033001AV	ST033001AV	1
15	Unloader	ST128406AV	ST128406AV	ST128406AV	ST128406AV	1
16	Throttle control	CV006403AV	CV006404AV	CV006404AV	CV006403AV	1
17	Pump	VT470000KB	VT470000KB	VT470000KB	VT470000KB	1
18	Locknut	ST146000AV	ST146000AV	ST146000AV	ST146000AV	4
19	Screw	ST012800AV	ST012800AV	ST012800AV	ST012800AV	4
20	Compression assembly	ST018300AV	ST018300AV	ST018300AV	ST018300AV	1
21	Oil drain plug	ST022300AV	ST022300AV	ST022300AV	ST022300AV	1
22	Locknut	AL014000AV	AL014000AV	AL014000AV	AL014000AV	4
23	Washer	ST1140100AV	ST111200AV	ST011200AV	ST140100AV	4
24	Hex head screw	ST070625AV	ST070625AV	ST070625AV	ST070625AV	4
25	Engine	NG002300AV	NG002502AV	NG002502AV	NG002300AV	1
26	Brace assembly	BG208800AJ	BG208800AJ	BG208800AJ	BG208800AJ	1
27	Locknut	ST146000AV	—	—	ST146000AV	1
28	Lockwasher	ST015100AV	—	—	ST015100AV	1
29	Key	KE000903AV	KE000903AV	KE000903AV	KE000903AV	1
30	Beltguard (back)	BG217902AV	BG217902AV	BG218700AV	BG218700AV	1
31	Self tapping screw	ST073269AV	ST073269AV	—	—	1
32	Key	KE000900AV	KE000900AV	KE000900AV	KE000900AV	1
33	Flywheel	PU015900AG	PU15900AG	PU015900AG	PU015900AG	1
34	Setscrew	ST026200AV	ST026200AV	ST026200AV	ST026200AV	1
35	Beltguard (front)	BG217800AV	BG217800AV	BG218800AV	BG218800AV	1
36	Plascrew	ST058502AV	ST058502AV	—	—	1
37	Belt	BT023100AV	BT023100AV	BT023100AV	BT023100AV	1
38	Square head setscrew	ST012200AV	ST012200AV	ST012200AV	ST012200AV	1
39	Pulley	PU015400AG	PU015400AG	PU015400AG	PU015400AG	1
40	Self tapping screw	ST042400AV	ST042400AV	ST042400AV	ST042400AV	4
41	Regulator	RE206203AV	RE206203AV	RE206203AV	RE206203AV	1
42	Flatwasher	ST070906AV	ST070906AV	ST070906AV	ST070906AV	4
43	Nut	ST163200AV	ST163200AV	ST163200AV	ST163200AV	4
44	Cross T-Connector	ST149300AV	ST149300AV	ST149300AV	ST149300AV	1
45	NPT Reducer	ST071407AV	ST071407AV	ST071407AV	ST071407AV	1
46	Δ Warning Decal/ 3 Piece	DK630000AV	DK630000AV	DK630000AV	DK630000AV	1
47	Δ Spark Arrestor Warning Decal	DK065101AJ	DK065101AJ	DK065101AJ	DK065101AJ	1
48	Δ Explosive Fuel Warning Decal	DK197101AV	DK197101AV	DK197101AV	DK197101AV	1
49	Δ Throttle Warning Decal	DK363801AV	DK363801AV	DK363801AV	DK363801AV	1
50	Filter Assembly	—	—	ST073915AV	ST073915AV	1
51	Filter Element	—	—	ST073916AV	ST073916AV	1
52	Δ Inspection port reducer 11/2 x 1/4"	PG150008AV	PG150008AV	—	—	2
53	Δ Inspection port plug	—	—	PG150004AV	PG150004AV	2
54	Δ Inspection port o-ring	ST070219AV	ST070219AV	ST070219AV	ST070219AV	2

Δ Not shown

★ Replacement parts for engine available from engine manufacturer.

## VT614805, VT617104, VT629601 & VT629701

**Para ordenar repuestos, sírvase llamar al distribuidor de Campbell Hausfeld más cercano a su domicilio**

Sírvase darnos la siguiente información:

-Número del modelo

-Número de Serie (de haberlo)

-Descripción y número del repuesto según la lista de repuestos

Puede escribirnos a:

Campbell Hausfeld

100 Production Drive

Harrison, OH 45030 U.S.A.

No. de Ref.	Descripción	Repuestos para VT614805	los modelos VT617104	VT629601	VT629701	Ctd
1	Tanque	AR048200CG	AR048200CG	AR034000CG	AR034000CG	1
2	Mango	HL001801BH	HL001801BH	—	—	1
3	Llave de drenaje	D-1401	D-1401	D-1401	D-1401	1
4	Pata	ST041600AV	ST041600AV	—	—	2
5	Tornillo para el mango	ST073236AV	ST073236AV	—	—	1
6	Reuda	WA004000AV	WA004000AV	—	—	2
7	Perno para el eje	ST033400AV	ST033400AV	—	—	2
8	Tuerca hex	ST033500AV	ST033500AV	—	—	2
9	Manómetro	GA16300AV	GA16300AV	GA16300AV	GA16300AV	2
10	Niple	HF002401AV	HF002401AV	HF002401AV	HF002401AV	2
11	Válvula de seguridad ASME	V-215100AV	V-215100AV	V-215100AV	V-215100AV	1
12	Tubo de descarga	VT045100AP	VT045100AP	VT045100AP	VT045100AP	1
13	Manga	ST067300AV	ST067300AV	ST067300AV	ST067300AV	1
14	Tuerca de compresión	ST033001AV	ST033001AV	ST033001AV	ST033001AV	1
15	Descarregador	ST128406AV	ST128406AV	ST128406AV	ST128406AV	1
16	Regulador	CV006403AV	CV006404AV	CV006404AV	CV006403AV	1
17	Cabezal	VT470000KB	VT470000KB	VT470000KB	VT470000KB	1
18	Tuerca de seguridad	ST146000AV	ST146000AV	ST146000AV	ST146000AV	4
19	Tornillo	ST012800AV	ST012800AV	ST012800AV	ST012800AV	4
20	Ensamblaje de compresión	ST018300AV	ST018300AV	ST018300AV	ST018300AV	1
21	Tapón para el drenaje de aceite	ST022300AV	ST022300AV	ST022300AV	ST022300AV	1
22	Tuerca de seguridad	AL014000AV	AL014000AV	AL014000AV	AL014000AV	4
23	Arandela	ST140100AV	ST011200AV	ST011200AV	ST140100AV	4
24	Tornillo hex	ST070625AV	ST070625AV	ST070625AV	ST070625AV	4
25	Motor	NG002300AV	NG002502AV	NG002502AV	NG002300AV	1
26	Abrazadera	BG208800AJ	BG208800AJ	BG208800AJ	BG208800AJ	1
27	Tuerca de seguridad	ST146000AV	—	—	ST146000AV	1
28	Arandela	ST015100AV	—	—	ST015100AV	1
29	Chaveta	KE000903AV	KE000903AV	KE000903AV	KE000903AV	1
30	Tapa protectora de bandas (posterior)	BG217902AV	BG217902AV	BG218700AV	BG218700AV	1
31	Tornillo autorroscante	ST073269AV	ST073269AV	—	—	1
32	Chaveta	KE000900AV	KE000900AV	KE000900AV	KE000900AV	1
33	Volante	PU015900AG	PU15900AG	PU015900AG	PU015900AG	1
32	Tornillo	ST026200AV	ST026200AV	ST026200AV	ST026200AV	1
35	Tapa protectora de bandas (frontal)	BG217800AV	BG217800AV	BG218800AV	BG218800AV	1
36	Tornillo	ST058502AV	ST058502AV	—	—	1
37	Banda	BT023100AV	BT023100AV	BT023100AV	BT023100AV	1
38	Tornillo cuadrado	ST012200AV	ST012200AV	ST012200AV	ST012200AV	1
39	Polea	PU015400AG	PU015400AG	PU015400AG	PU015400AG	1
40	Tornillo autorroscante	ST042400AV	ST042400AV	ST042400AV	ST042400AV	4
41	Regulador	RE206203AV	RE206203AV	RE206203AV	RE206203AV	1
42	Arandela plana	ST070906AV	ST070906AV	ST070906AV	ST070906AV	4
43	Tuerca	ST163200AV	ST163200AV	ST163200AV	ST163200AV	4
44	Conector en cruz	ST149300AV	ST149300AV	ST149300AV	ST149300AV	1
45	Reductor	ST071407AV	ST071407AV	ST071407AV	ST071407AV	1
46	Δ Etiquetas de advertencia (3)	DK630000AV	DK630000AV	DK630000AV	DK630000AV	1
47	Δ Etiqueta de advertencia del parachispas	DK065101AJ	DK065101AJ	DK065101AJ	DK065101AJ	1
48	Δ Etiquetas de advertencia de combustible explosivo	DK197101AV	DK197101AV	DK197101AV	DK197101AV	1
49	Etiqueta de advertencia de la palanca de accionamiento	DK363801AV	DK363801AV	DK363801AV	DK363801AV	1
50	Ensamblaje del filtro	—	—	ST073915AV	ST073915AV	1
51	Elemento del filtro	—	—	ST073916AV	ST073916AV	1
52	Δ Reductor de orificio de inspección 3,81 cm x 6,4 mm (1 1/2" x 1/4")	PG150008AV	PG150008AV	—	—	2
53	Δ Conector de orificio de inspección	—	—	PG150004AV	PG150004AV	2
54	Δ Anillo en o para el orificio de inspección	ST070219AV	ST070219AV	ST070219AV	ST070219AV	2

Δ No se muestra

★ Para ordenar las piezas del motor debe comunicarse con el fabricante del mismo.

## Pour Pièces De Rechange, appeler 1-800-543-6400

S'il vous plaît fournir l'information suivant:

- Numéro du modèle
- Numéro de série (si applicable)
- Description de la pièce et son numéro sur la liste de pièces

Correspondance concernant les pièces :

Campbell Hausfeld  
100 Production Drive  
Harrison, OH 45030 U.S.A.

No. de Réf.	Description	Numéro De Pièce Pour Modèles				Qte.
		VT614805	VT617104	VT629601	VT629701	
1	Réservoir	AR048200CG	AR048200CG	AR034000CG	AR034000CG	1
2	Poignée	HL001801BH	HL001801BH	—	—	1
3	Robinet de purge	D-1401	D-1401	D-1401	D-1401	1
4	Pied	ST041600AV	ST041600AV	—	—	2
5	Vis de poignée	ST073236AV	ST073236AV	—	—	1
6	Roue	WA004000AV	WA004000AV	—	—	2
7	Boulon d'axe	ST033400AV	ST033400AV	—	—	2
8	Ecrou hexagonale	ST033500AV	ST033500AV	—	—	2
9	Manomètre	GA16300AV	GA16300AV	GA16300AV	GA16300AV	2
10	Mamelon	HF002401AV	HF002401AV	HF002401AV	HF002401AV	2
11	Soupape de sûreté ASME	V-215100AV	V-215100AV	V-215100AV	V-215100AV	1
12	Tuyau de d'charge	VT045100AP	VT045100AP	VT045100AP	VT045100AP	1
13	Virrole	ST067300AV	ST067300AV	ST067300AV	ST067300AV	1
14	Ecrou de compression	ST033001AV	ST033001AV	ST033001AV	ST033001AV	1
15	Décharger	ST128406AV	ST128406AV	ST128406AV	ST128406AV	1
16	Commande d'obturateur	CV006403AV	CV006404AV	CV006404AV	CV006403AV	1
17	Pompe	VT470000KB	VT470000KB	VT470000KB	VT470000KB	1
18	Contre-écrou	ST146000AV	ST146000AV	ST146000AV	ST146000AV	4
19	Vis	ST012800AV	ST012800AV	ST012800AV	ST012800AV	4
20	Compression assembly	ST018300AV	ST018300AV	ST018300AV	ST018300AV	1
21	Bouchon de vidange d'huile	ST022300AV	ST022300AV	ST022300AV	ST022300AV	1
22	Contre-écrou	AL014000AV	AL014000AV	AL014000AV	AL014000AV	4
23	Rondelle	ST140100AV	ST011200AV	ST011200AV	ST140100AV	4
24	Vis à tête hexagonale	ST070625AV	ST070625AV	ST070625AV	ST070625AV	4
25	Moteur	NG002300AV	NG002502AV	NG002502AV	NG002300AV	1
26	Montage de support	BG208800AJ	BG208800AJ	BG208800AJ	BG208800AJ	1
27	Contre-écrou	ST146000AV	—	—	ST146000AV	1
28	Rondelle-frein	ST015100AV	—	—	ST015100AV	1
29	Clavette	KE000903AV	KE000903AV	KE000903AV	KE000903AV	1
30	Carter de courroie (arrière)	BG217902AV	BG217902AV	BG218700AV	BG218700AV	1
31	Vis autoforeuse	ST073269AV	ST073269AV	—	—	1
32	Clavette	KE000900AV	KE000900AV	KE000900AV	KE000900AV	1
33	Volant	PU015900AG	PU15900AG	PU015900AG	PU015900AG	1
34	Vis de pression	ST026200AV	ST026200AV	ST026200AV	ST026200AV	1
35	Carter de courroie (avant)	BG217800AV	BG217800AV	BG218800AV	BG218800AV	1
36	Vis	ST058502AV	ST058502AV	—	—	1
37	Courroie	BT023100AV	BT023100AV	BT023100AV	BT023100AV	1
38	Vis de pression à tête carre	ST012200AV	ST012200AV	ST012200AV	ST012200AV	1
39	Poulie	PU015400AG	PU015400AG	PU015400AG	PU015400AG	1
40	Vis autoforeuse	ST042400AV	ST042400AV	ST042400AV	ST042400AV	4
41	Régulateur	RE206203AV	RE206203AV	RE206203AV	RE206203AV	1
42	Rondelle plate	ST070906AV	ST070906AV	ST070906AV	ST070906AV	4
43	Écrou	ST163200AV	ST163200AV	ST163200AV	ST163200AV	4
44	Raccord transversal en T	ST149300AV	ST149300AV	ST149300AV	ST149300AV	1
45	Raccord de réduction	ST071407AV	ST071407AV	ST071407AV	ST071407AV	1
46	Δ Décalcomie d'avertissement, 3 pièces	DK630000AV	DK630000AV	DK630000AV	DK630000AV	1
47	Δ Étiquette d'avertissement pour pare-étincelles	DK065101AJ	DK065101AJ	DK065101AJ	DK065101AJ	1
48	Δ Étiquette d'avertissement pour combustible explosif	DK197101AV	DK197101AV	DK197101AV	DK197101AV	1
49	Δ Décalcomie d'Avertissement pour Obturateur	DK363801AV	DK363801AV	DK363801AV	DK363801AV	1
50	Assemblage de filtre	—	—	ST073915AV	ST073915AV	1
51	Cartouche filtrante	—	—	ST073916AV	ST073916AV	1
52	Δ Raccord de réduction de porte de inspection 11/2 po x 1/4 po	PG150008AV	PG150008AV	—	—	2
53	Δ Bouchon de porte de inspection	—	—	PG150004AV	PG150004AV	2
54	Δ Joint torique de porte de inspection	ST070219AV	ST070219AV	ST070219AV	ST070219AV	2
Δ	Pas indiqué					
★	Pièces de rechange pour moteur à gaz disponible chez le fabricant de moteur					